



General Laboratory Safety Rules

Biology Department
American University of Beirut

General Laboratory Rules

Wear lab coats



**Lab coats
must be worn
in this area**



← Long Sleeves

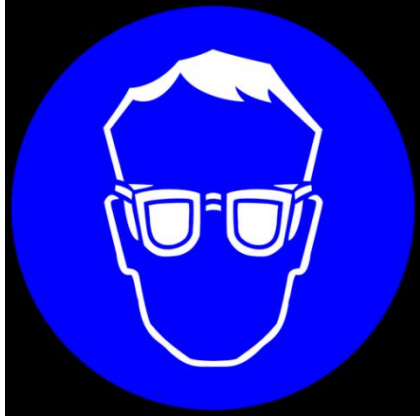
← Knee length

To protect the skin from spills and splashes.

To protect the regular clothing from dirt and non-obvious contamination.

Not to catch fire easily, as many lab coats are fire resistant.

Wear appropriate eye protection



To protect eyes from splashing chemicals and fumes.

Wear protecting gloves



To protect the hands when handling hazardous materials and chemicals.

▶ **REMEMBER!**

▶ **Do not wear gloves:**

- ▶ When touching common surfaces, such as telephones, computers, door knobs, and elevator buttons, or that may be touched without gloves by others.

Tie long hair up.



Long hair must be tied back, so it will not fall into chemicals or flames.

Wear closed shoes



Covered Shoes



No Open Toed Shoes

To protect the feet from any chemical spill or broken glass.

Legs should be covered



Long Pants/Trousers



No Shorts/Skirts

No eating and no drinking



NO



SMOKING

No applying makeup



Keep clean work places free of unwanted chemicals, biological specimens, radios, and idle equipment



Wash hands before leaving the laboratory.

Wash before eating, drinking, smoking, or applying make-up.



Leave behind protective clothing (lab coats, gloves, etc.) when leaving the laboratory .



Emergency Responses

Become familiar with the location of the emergency **exits**.

Keep exits and passageways clear at all time



In Case of Fire



- Remain calm. Do not shout Fire.
- Rescue: Rescue personnel who are in immediate danger. This step is usually performed simultaneously with step 3 Alarm.
- Alarm: Sound the alarm. Dial 5555 and inform operator of exact location of fire.
- Contain: Close doors and windows to isolate fire and smoke from rest of the building.
- Evacuate: Evacuate the building using the nearest exit (Do not use elevators). Do not reenter the building until the alarm is silenced and you are told that it is safe to reenter.
-

REMEMBER !!

- ▶ In Case of Fire, Follow the **RACE** Procedure
- ▶ 1- **R**escue
- ▶ 2- **A**larm
- ▶ 3- **C**ontain
- ▶ 4- **E**vacuate

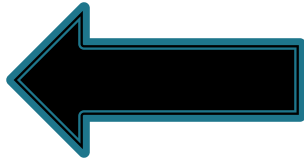


Location of Telephone Handset

Telephone handset is near the exit.



Emergency Contact Numbers



This sticker is provided by EHSRM and is found on all telephone handsets of the university.

Telephone Handset



Emergency Contact
Numbers

Emergency Contact Numbers

Contact

Phone Number



Fire Department ————— 5555



Protection Office ————— 2400



Safety ————— 2360
(8AM – 5 PM)



Person Responsible

Dr. Khouzama Knio ——— 3886

Mrs. Rania El Osta (Lab Manager) 3924

Become familiar with the location and operation of the first aid kit



Become familiar with the location and operation of the **emergency eye wash station**



Contamination of the Eyes

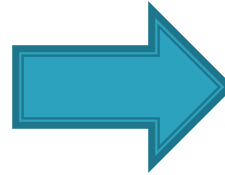
- ▶ Don't rub the eyes.
- ▶ Hold eyelids open and flush with water for 15 minutes.
- ▶ Be careful not to contaminate the other eye.
- ▶ Get medical attention promptly. Transport to Emergency Department.



Proper Waste Disposal

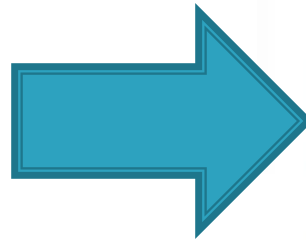
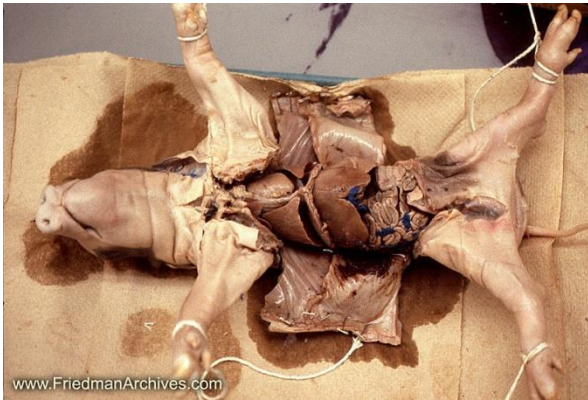
Regular Waste

- ▶ In black bags



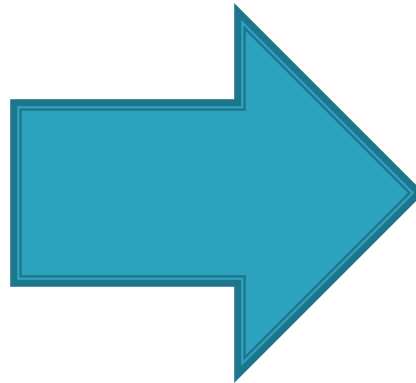
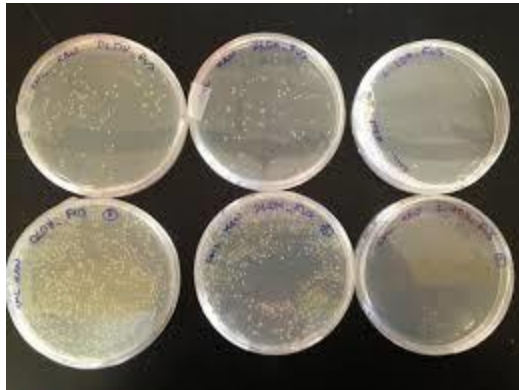
Dissected biological specimens

- ▶ In Blue Bags



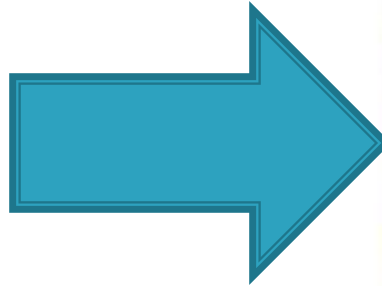
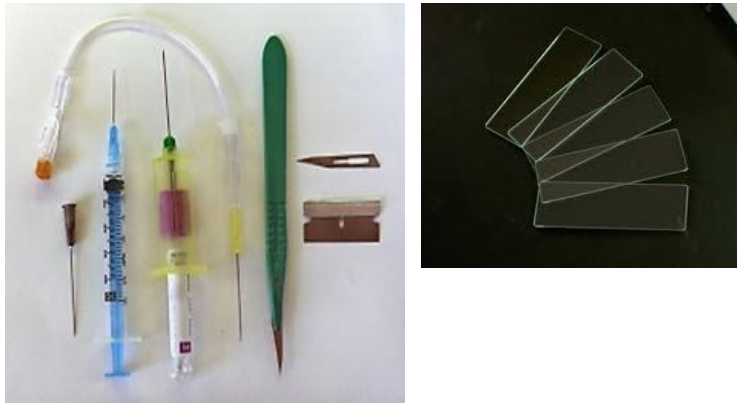
Cultured bacteria in agar plates

- ▶ In yellow biohazard bags



Sharps

- ▶ In yellow bucket

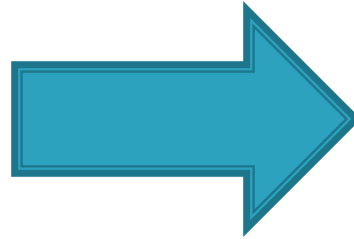


Do not discard the following in the yellow bucket

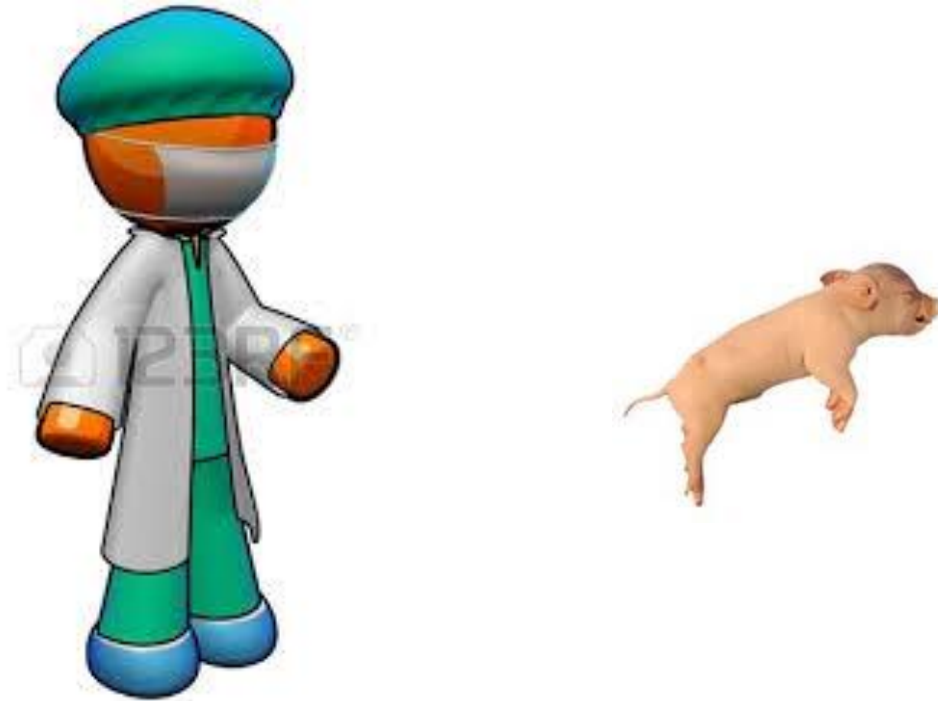


Broken Glassware

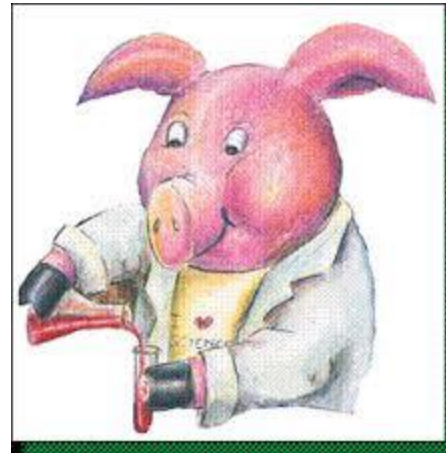
- ▶ In paper box

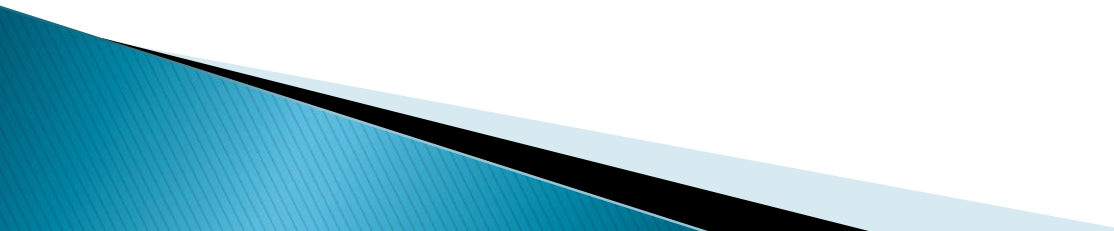


Proper Handling of Preserved Animals



- ▶ Biological specimens are preserved in formalin (Mixture of Formaldehyde, water and methanol)
- ▶ Formaldehyde produces unpleasant odors and vapors that cause irritation if inhaled.
- ▶ The working place must be well ventilated.



- ▶ Each person handling preserved specimens must wear lab coat, gloves and goggles
 - ▶ Practice safe hygiene when dissecting. Do not place your hands near your mouth or eyes while handling preserved specimens
 - ▶ If the preservative gets on your skin, wash with soap and warm water
 - ▶ If the preservative gets in your eyes, rinse thoroughly with the safety eyewash
 - ▶ Each student must thoroughly wash his/her hands after the procedure
 - ▶ Lab gloves and paper towels go in the regular trash
 - ▶ Skin and pieces of pig go into the blue plastic bags designated by your instructor
- 

Thank you

